

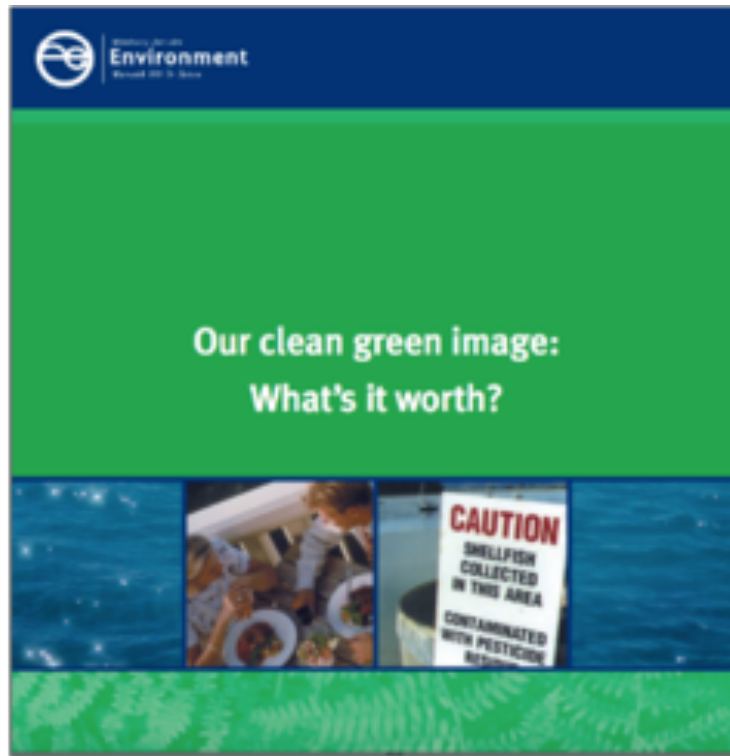
MARNIE PRICKETT
ORGANISER & SPOKESPERSON

CHOOSE
CLEAN
WATER

THIS BEAUTIFUL PLACE



MINISTRY FOR THE ENVIRONMENT, 2001



MINISTRY FOR THE ENVIRONMENT, 2001

“Environmental image is a substantial driver of the value New Zealand can derive for goods and services in the international market place.”



MINISTRY FOR THE ENVIRONMENT, 2001

“[W]e have a buffer, a period during which our environment could degrade without it necessarily affecting our image and therefore our exports.

This is precisely the danger.”

The bottom of the slide features a decorative design with three overlapping geometric shapes: a blue triangle on the left, a teal triangle in the middle, and a light blue triangle on the right.

HAWKE'S BAY



CANTERBURY



WAIKATO



END OF THE BUFFER?



END OF BUFFER?

“New Zealand’s growth model, largely based on exporting primary products, has started to show its environmental limits with increased greenhouse gas emissions, diffuse freshwater pollution and threats to biodiversity.”

OECD, 2017

The bottom of the slide features a decorative design with three overlapping geometric shapes: a blue triangle on the left, a teal triangle in the middle, and a light blue triangle on the right.



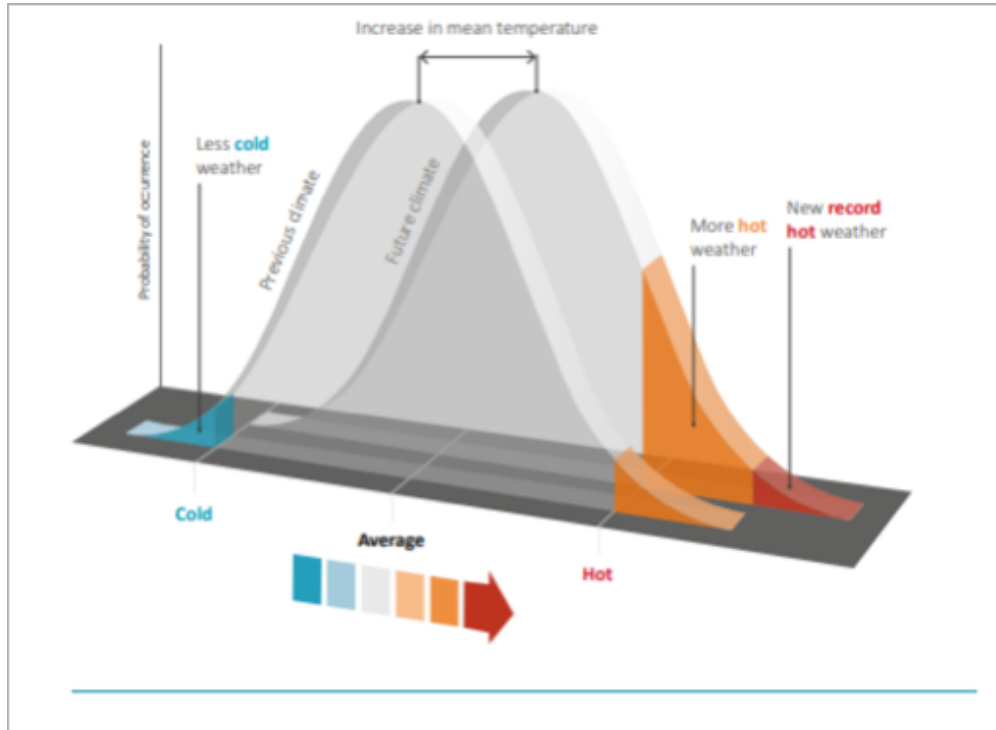
CHOOSE
CLEAN
WATER



CHOOSE CLEAN WATER



FUTURE OF DISRUPTION





RESPONSE TO CLIMATE CHANGE



RESPONSE TO CLIMATE CHANGE



RESPONSE TO CLIMATE CHANGE

DAIRYNEWS

NATIONAL WORLD OPINION AGRIBUSINESS MANAGEMENT FARM HEALTH MACHINERY & PRODUCTS MOTORING

Wednesday, 14 February 2018 14:55

Mad mother nature

Written by Peter Burke

font size   | Print | Email

'Bizarre' is how DairyNZ's general manager for extension, Andrew Reid, describes the current season with its weird mixture of floods and droughts in regions that normally don't get these conditions.

He says the recent declaration of drought in Southland and Otago followed by the massive deluge that hit parts of the West Coast are examples of the unusual weather experienced by dairy farmers



RESPONSE TO FRESHWATER POLLUTION

"We don't need that one.

That one has rules in it.

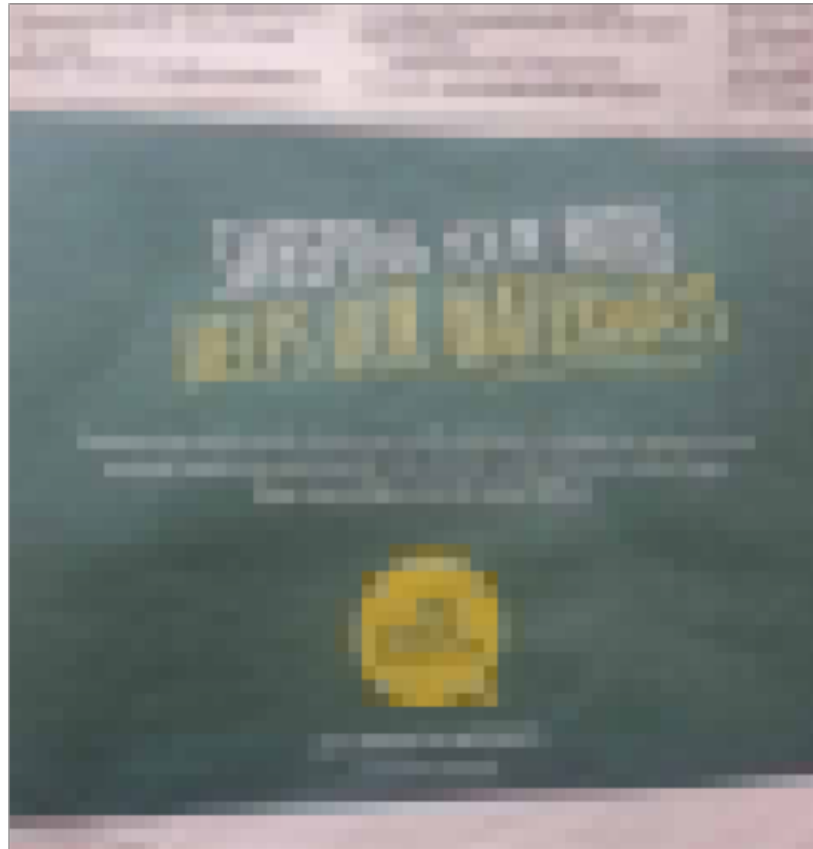
If he adopts it there will be major problems for everyone."



RESPONSE TO FRESHWATER POLLUTION



RESPONSE TO FRESHWATER POLLUTION



“JUST LEAVE US ALONE & WE WILL SORT THE PROBLEM OUT”



WHAT'S NEEDED NOW?

Fresh Farming Leadership

Good regulation, well implemented

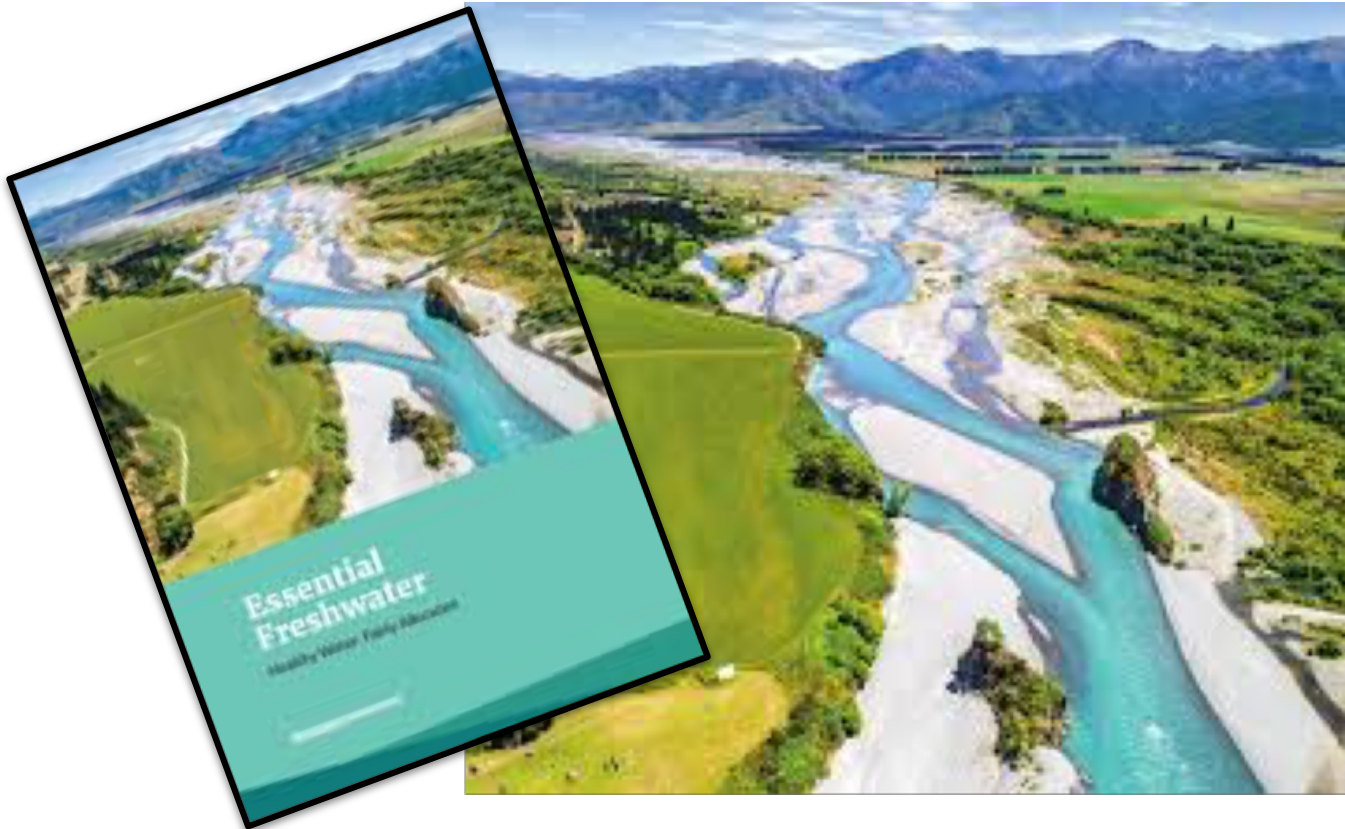
An aim to reduce inputs

The bottom of the slide features a decorative graphic consisting of three overlapping geometric shapes: a blue triangle on the left, a teal triangle in the middle, and a light blue triangle on the right.

Fresh Farming Leadership



Good regulation, well implemented



An aim to reduce inputs

