

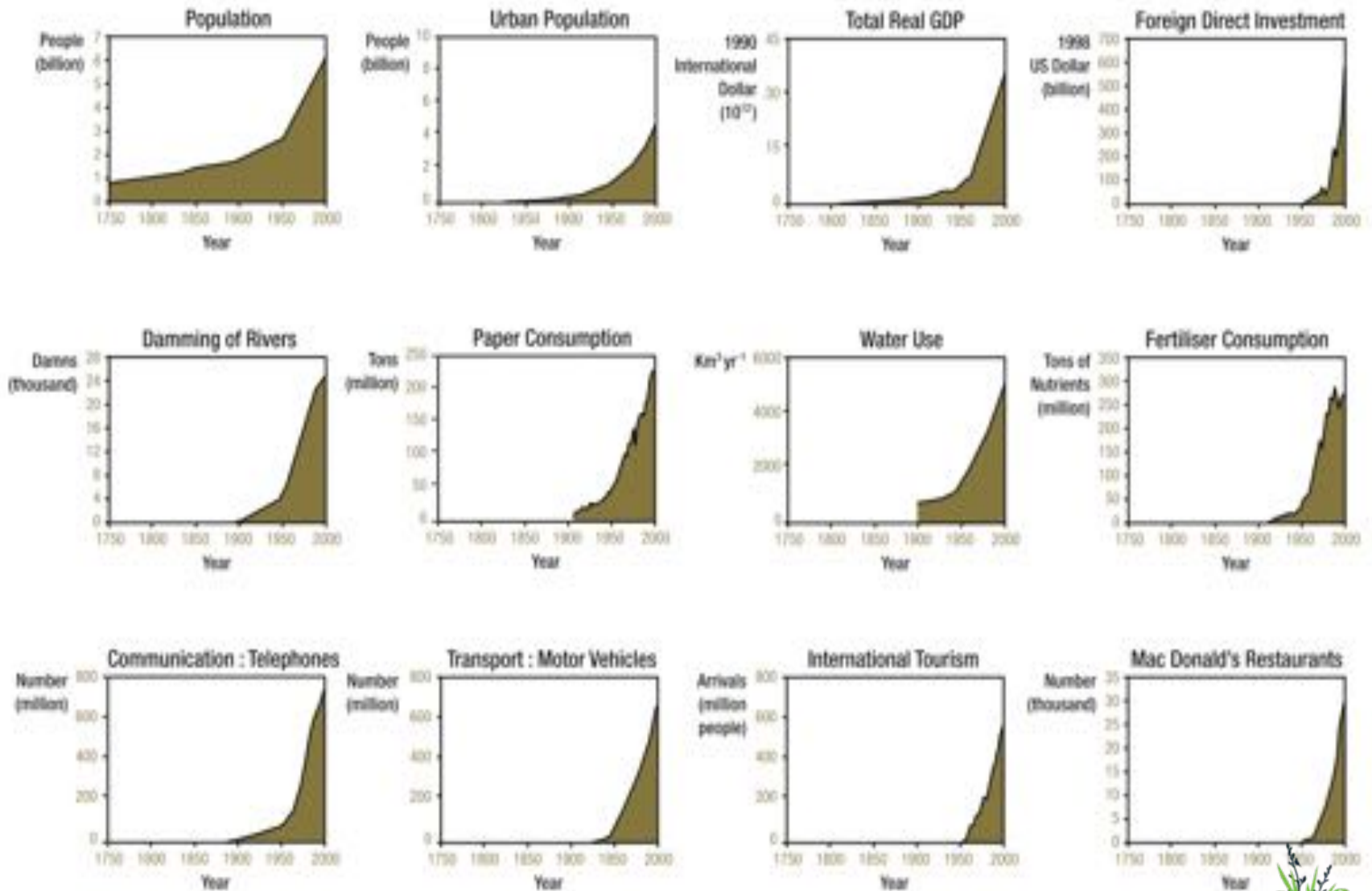
Mangarara – The Family Farm Farming at This Time of Great Change



MANGARARA

- THE FAMILY FARM & ECO LODGE -

Exponential Growth



Source: Steffen et al. (see note 20)



MANGARARA

- THE FAMILY FARM & ECO LODGE -

We cannot solve our problems
with the same thinking we used
when we created them

Albert Einstein



MANGARARA

- THE FAMILY FARM & ECO LODGE -

EGO



ECO



MANGARARA

- THE FAMILY FARM & ECO LODGE -





OR



OR



PERMACULTURE
DESIGN



KEYLINE
DESIGN



TRANSITION
NETWORK



HOLISTIC
MANAGEMENT



REGRARIANS
regenerative
ecological
effective
RARIANS



Polyface, Inc.



Biological
Agriculture

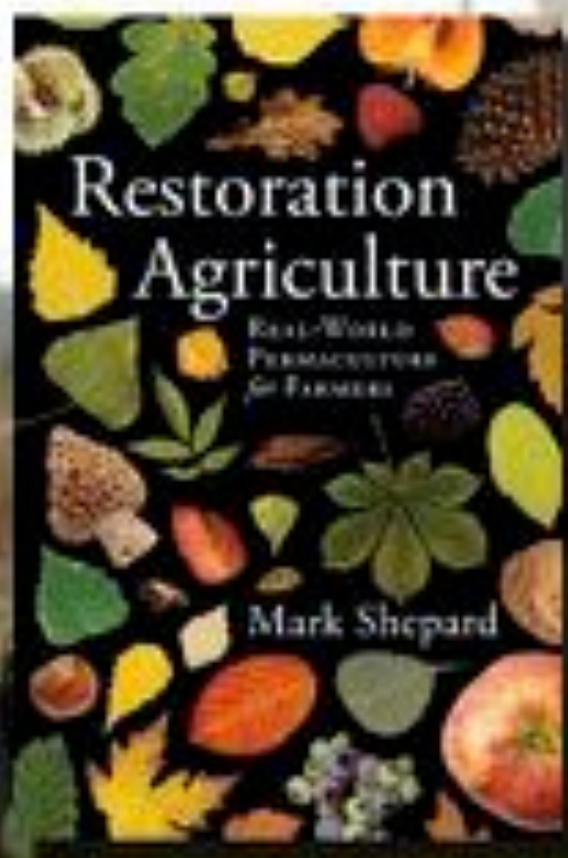
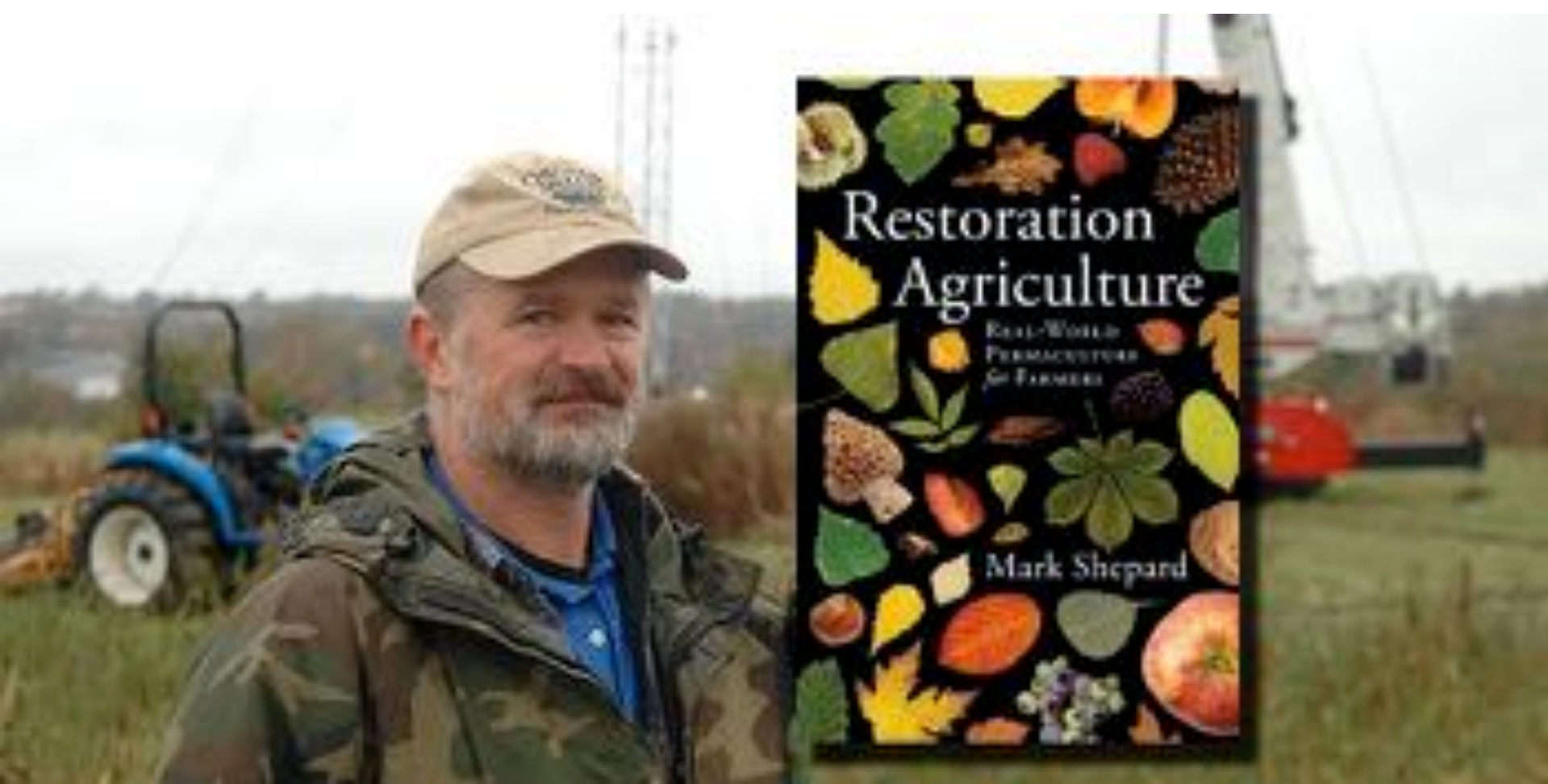


Restoration
Agriculture



WET
SYSTEMS





New Forest Farm





Regen



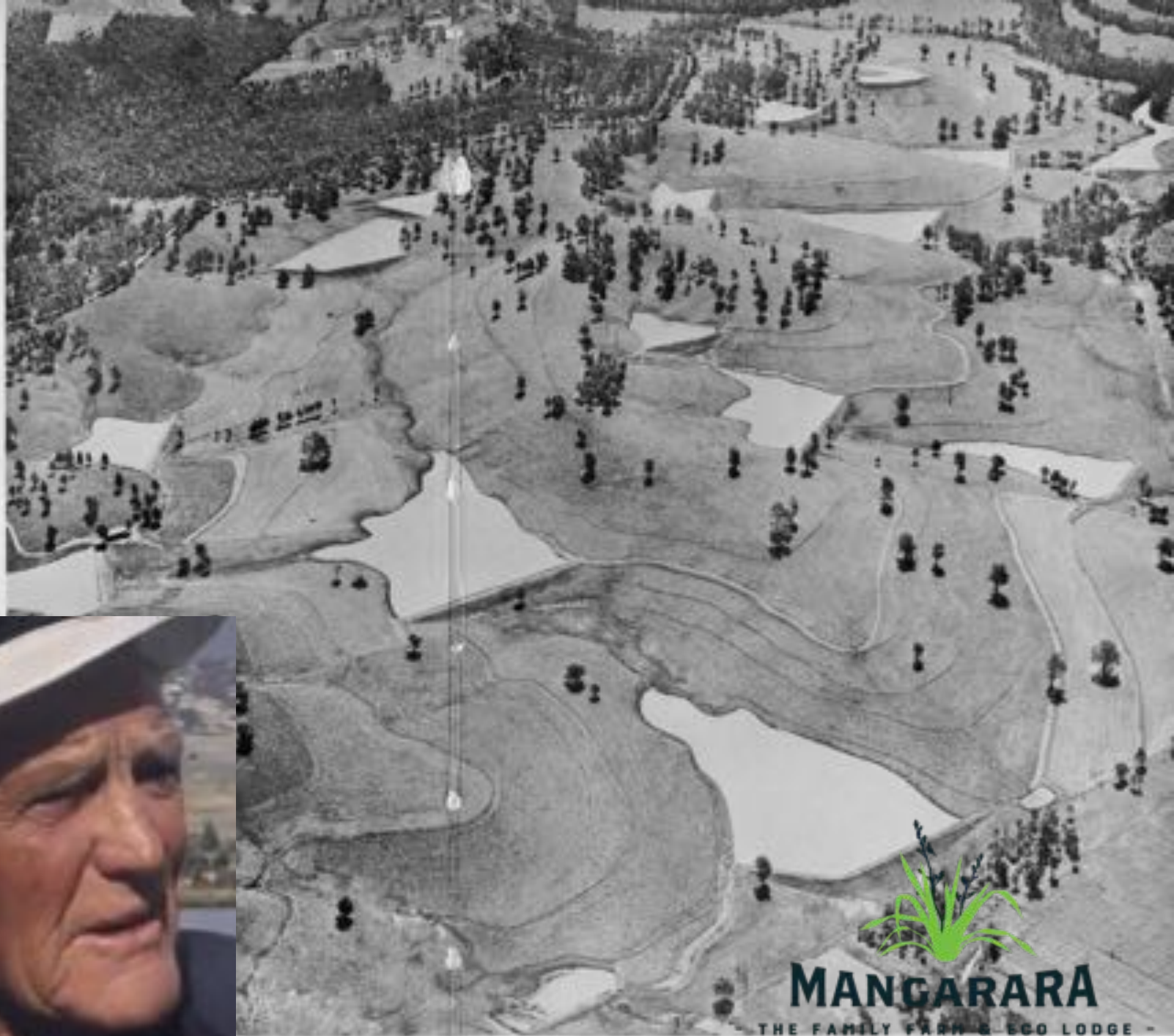
REGENERATIVE AGRICULTURE
AOTEAROA/NEW ZEALAND



Putting life back into farming

PLATE 5

"Yohumie" photographs from the air, after 17 years of Keyline irrigation development. The property covers about 760 acres and fifteen full farm irrigation dams are visible in this picture. (Photographed by Douglass Baylin.)



MANGARARA

THE FAMILY FARM & ECO LODGE

REGENERATIVE AGRICULTURE

- **Regenerative Agriculture is a system of farming principles and practices that increases biodiversity, enriches soils, improves watersheds, and enhances ecosystem services.**
- **Regenerative Agriculture aims to capture carbon in soil and aboveground biomass, reversing current global trends of atmospheric accumulation.**
- **At the same time, it offers increased yields, resilience to climate instability, and higher health and vitality for farming and ranching communities, while reducing reliance on off farm inputs.**



MANGARARA

- THE FAMILY FARM & ECO LODGE -

Carbon Potential

PRACTICES – CARBON SEQUESTERED (metric tons per hectare per year)

ORGANIC ANNUAL CROPPING (WITH COMPOST & CROP ROTATION)
2-6 MT / HA / YR

MANAGED GRAZING
0-4 MT / HA / YR

SILVOPASTURE
3-34 MT / HA / YR

PERENNIAL CROPS
1-26 MT / HA / YR

AGROFORESTRY
3-41 MT / HA / YR

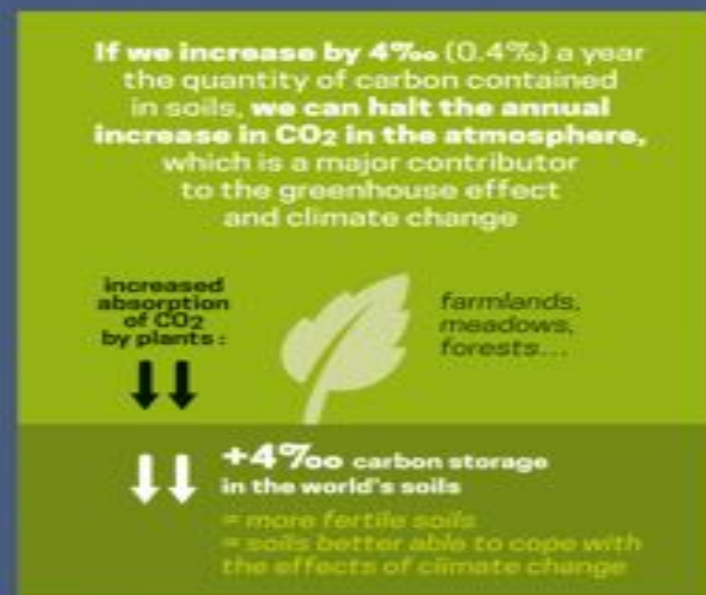
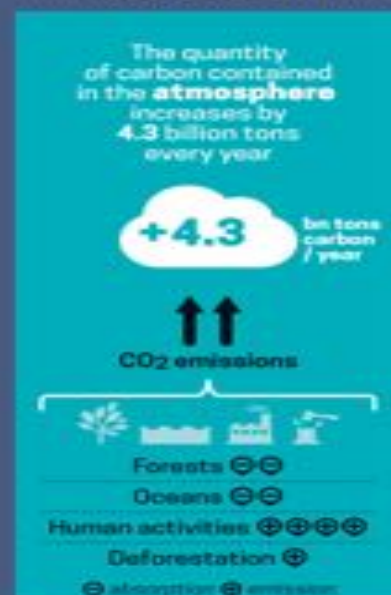
Data is from The Carbon Farming Solution: A Global Toolkit of Perennial Crops and Regenerative Agriculture Practices
for Climate Change Mitigation and Food Security by Eric Toensmeier
regenerativeagriculturedefinition.com



4 PER 1000

CARBON SEQUESTRATION IN SOILS FOR FOOD SECURITY AND THE CLIMATE

Ministère de l'Agriculture, de l'Agroalimentaire et de la Pêche



HOW CAN SOILS STORE MORE CARBON?

The more soil is covered, the richer it will be in organic material and therefore in carbon. Until now, the combat against global warming has largely focused on the protection and restoration of forests. In addition to forests, we must encourage more plant cover in all its forms.

Never leave soil bare and work it less, for example by using no-till methods

Introduce more intermediate crops, more row intercropping and more grass strips

Add to the hedges at field boundaries and develop agroforestry

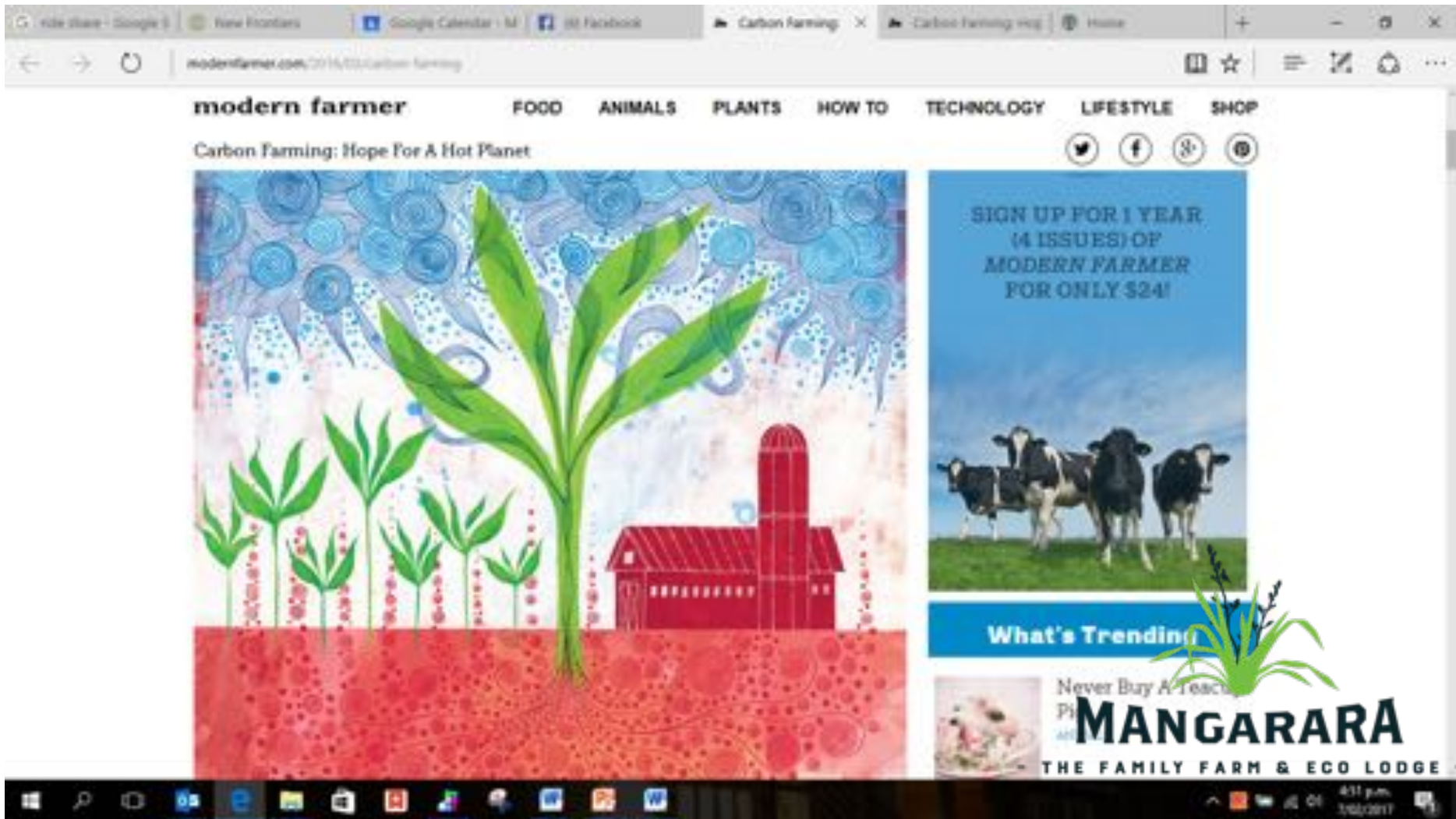
Optimize pasture management - with longer grazing periods, for example

Restore land in poor condition e.g. the world's arid and semi-arid regions

*"This international initiative can reconcile the aims of **food security** and the **combat against climate change**, and therefore engage every concerned country in COP21."*

Stéphane Le Foll, French Minister of Agriculture, Agri-food and Forestry

Carbon farming.
“the foundation of the future of civilization”
Paul Hawkin



The Next Hot Trends in Food

You may not have heard of moringa or regenerative grazing yet. But there's a good chance you will before long.

**MANGARARA**

- THE FAMILY FARM & ECO LODGE



MANGARARA

THE FAMILY FARM & ECO LODGE



MANGARARA

~ THE FAMILY FARM & ECO LODGE ~



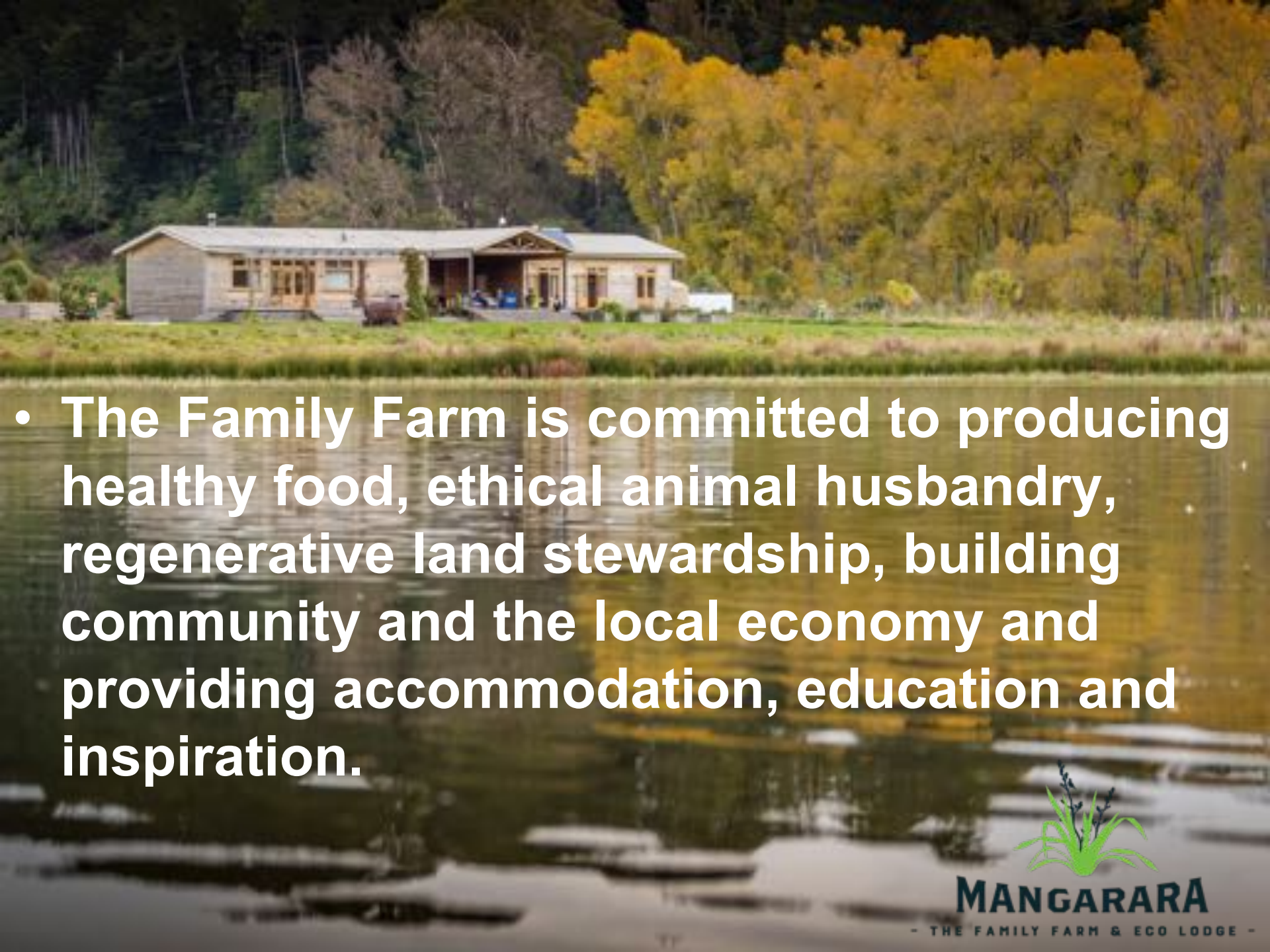
MANGARARA

- THE FAMILY FARM & ECO LODGE -

Pasture Yield per P & S input

Fertiliser	DM kg/kg P applied		DM kg/kg S	
	Low fertility	High	Low fertility	High
Biological	491	488	110	110
Super	27	49	12	38

David Crutchley
Shortland Staion



- The Family Farm is committed to producing healthy food, ethical animal husbandry, regenerative land stewardship, building community and the local economy and providing accommodation, education and inspiration.



MANGARARA

- THE FAMILY FARM & ECO LODGE -



MANGARARA

- THE FAMILY FARM & ECO LODGE -

Restoring Paradise



MANGARARA

— THE FAMILY FARM & ECO LODGE —



MANGARARA

- THE FAMILY FARM & ECO LODGE -



Million Metres
STREAMS PROJECT

• “Friend the Farm”



MANGARARA

- THE FAMILY FARM & ECO LODGE -





MANGARARA

THE FAMILY FARM & ECO LODGE



MANGARARA

- THE FAMILY FARM & ECO LODGE -

Good-2-Go Portable Hen Houses



www.thefamilyfarm.co.nz



MANGARARA
THE FAMILY FARM & ESTATE



MANGARARA

THE FAMILY FARM & ECO LODGE



MANGARARA

THE FAMILY FARM & ECO LODGE



Visit the native bush reserve at **MANGARARA STATION**

OPEN 9AM TO 5PM DAILY

3KM TO THE END OF MANGARARA RD
FURTHER INSTRUCTIONS ON SIGN AT ENTRANCE TO FARM



Greg and Rachel Hart | Mangarara Station
www.familyfarm.net.nz

This signage is proudly donated
by Big Colour Imaging Limited.
Images are printed utilising
water based Latex ink system.

0800 BIGCOLOUR // bigcolour.co.nz



AIR NEW ZEALAND
**ENVIRONMENT
TRUST**

www.mangarara.co.nz
www.thefamilyfarm.co.nz

**WANT TO HELP?
MAKE A DONATION.**

Visit www.airnzenvironmenttrust.org.nz or
tick the box when you book your next ticket online.